

Our Solution: FirstClass Scan Specifications



FIRSTCLASS SCAN

YOUR BENEFITS



Optimal comfort and reduced chair time for your patients.



Digitalize your practice: K Scan makes impressions fast and easy.



Open data system of K Scan allows saving the scans in different formats and use them flexibly.



High-quality digital impressions in lifelike colors to evaluate the treatment and to enable you to better engage with your patients.



Care about your patients as well as our environment! No more material waste due to taking physical impressions.



Our open-source system allows using the software for implants, crowns, orthodontics etc.



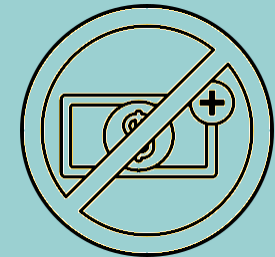
Excellent support



Free software and updates



2 years warranty



No hidden costs

FIRSTCLASS SCAN

The Success Story

2021 Performance



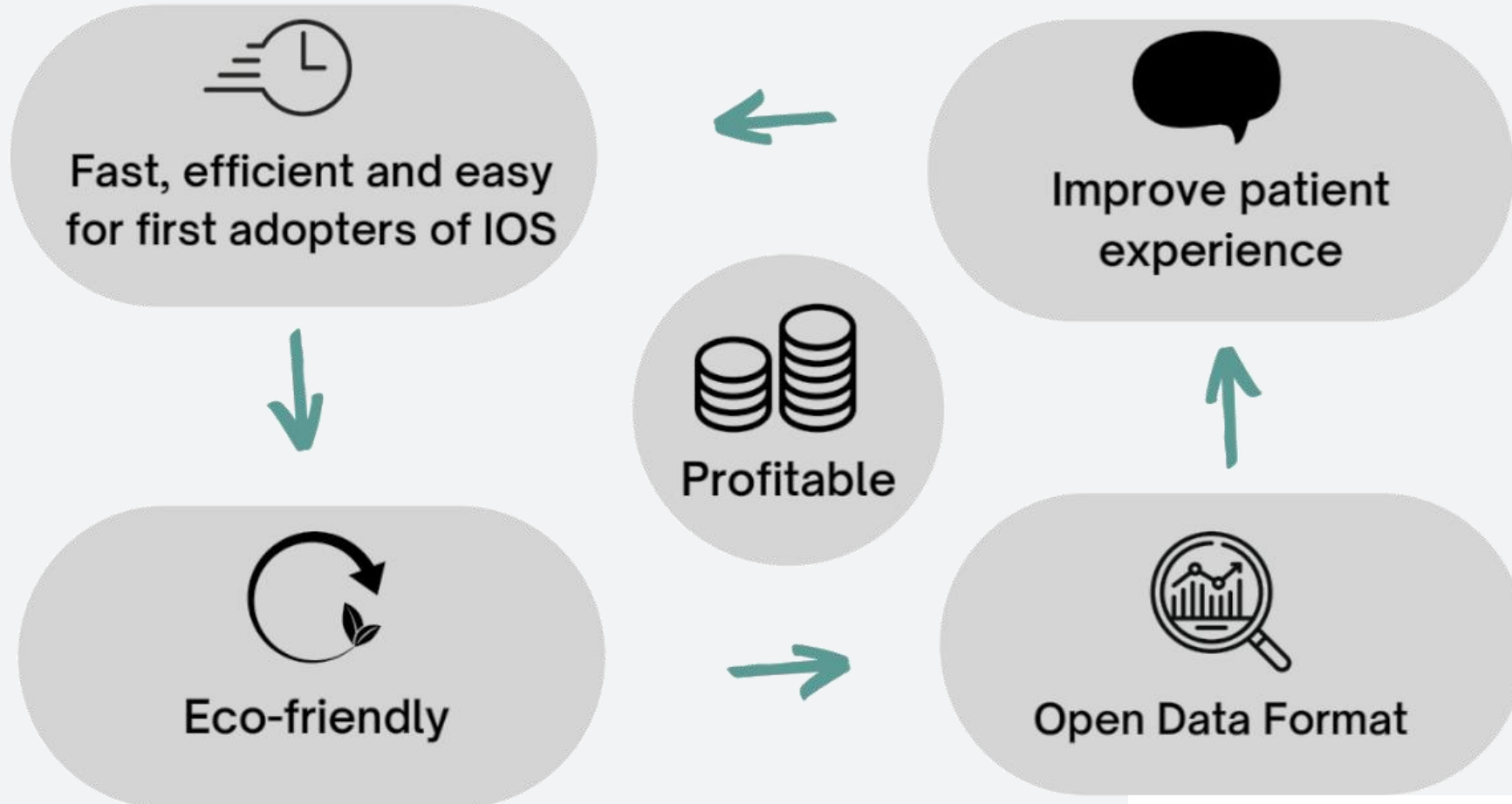
2022 Performance



Number of overall units sold worldwide

FIRSTCLASS SCAN

Profitable Workflow FirstClass Scan



FIRSTCLASS SCAN

Technical Specification

Scanner Dimensions:

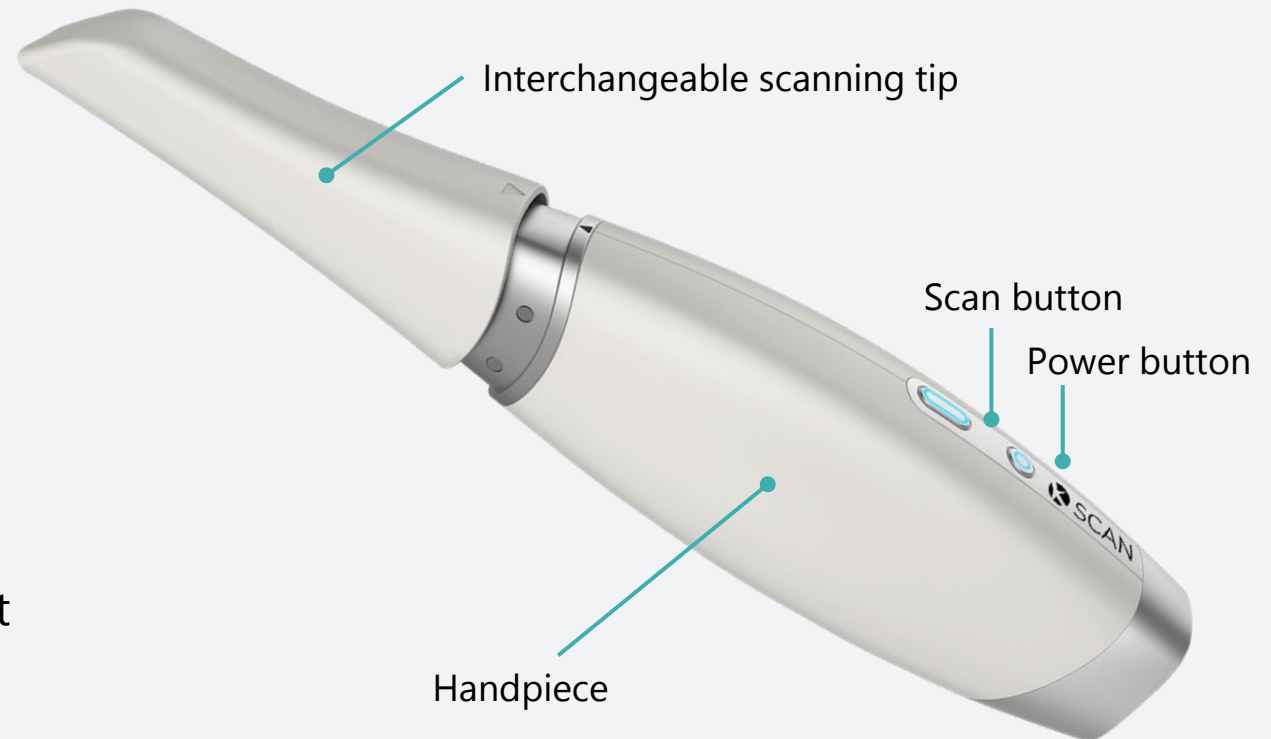
240 x 39.8 x 57 mm

Dimension Scanning Tips:

28 x 60 x 19 mm

Weight: 350 grams

- Autoclavable tips: 80 – 100 times each
- Inbuilt anti-fog module to prevent mirror from fogging
- No calibration needed

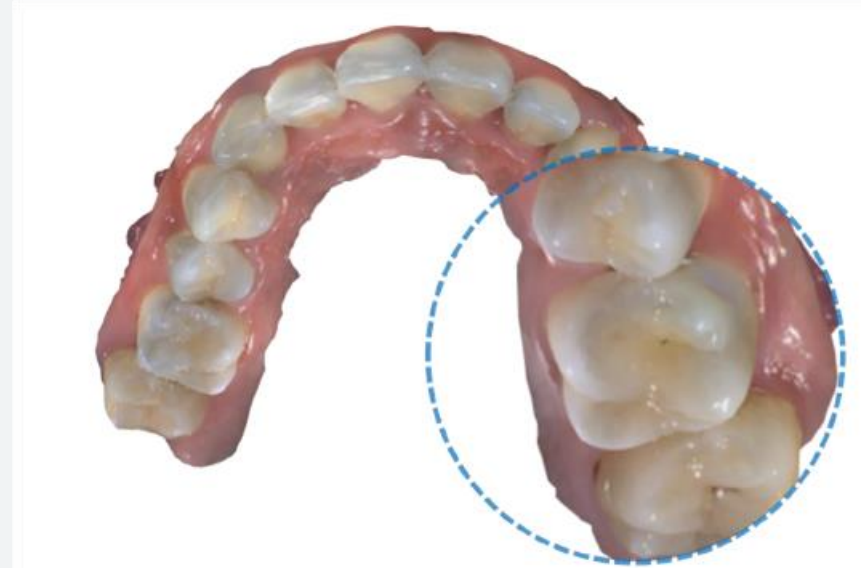


FIRSTCLASS SCAN

Benefits



Does not need calibration



Colour can reach up to 24 bit RGB

FIRSTCLASS SCAN

Software Features

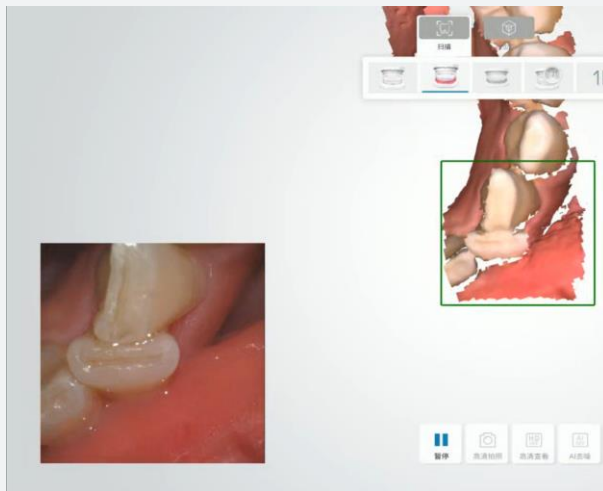
Occlusion Checking



Undercut Checking



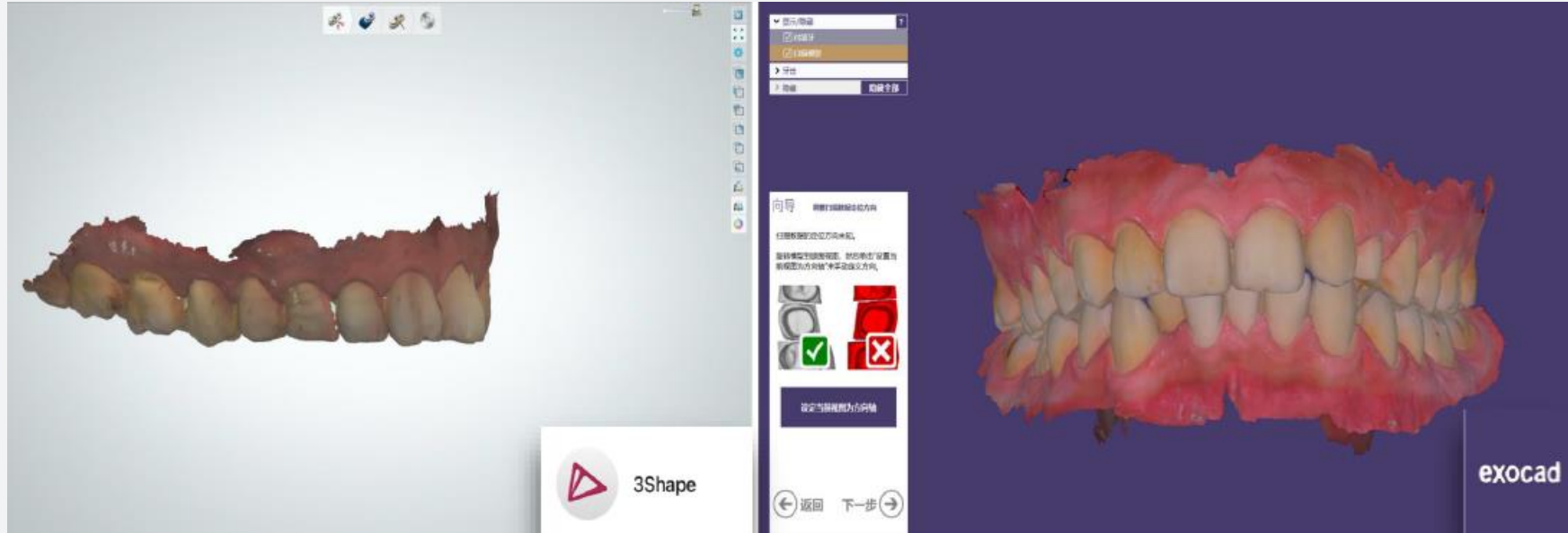
AI Scan



HD Photo



Fully Open Source – Export



You can choose your preferred workflow, as they support OBJ, STL and PLY files all widely used

Scan Process



Scanning full arch
approx. 3 minutes



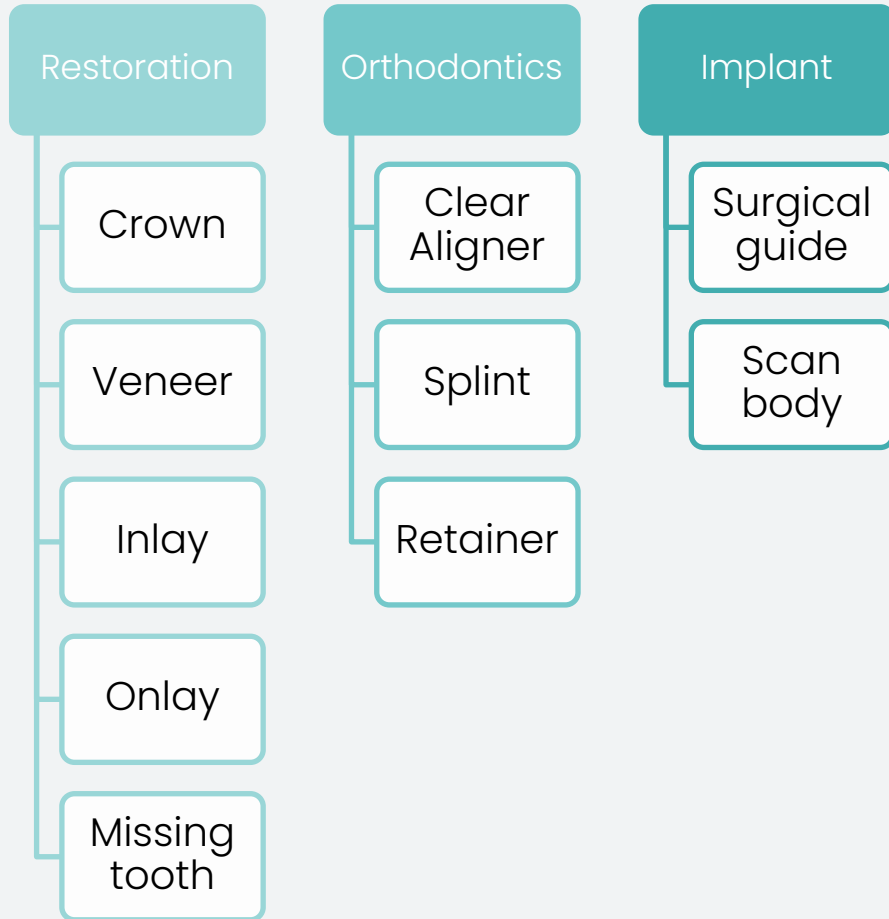
Bite matching approx. 5
seconds



Model optimization
approx. 1 minute

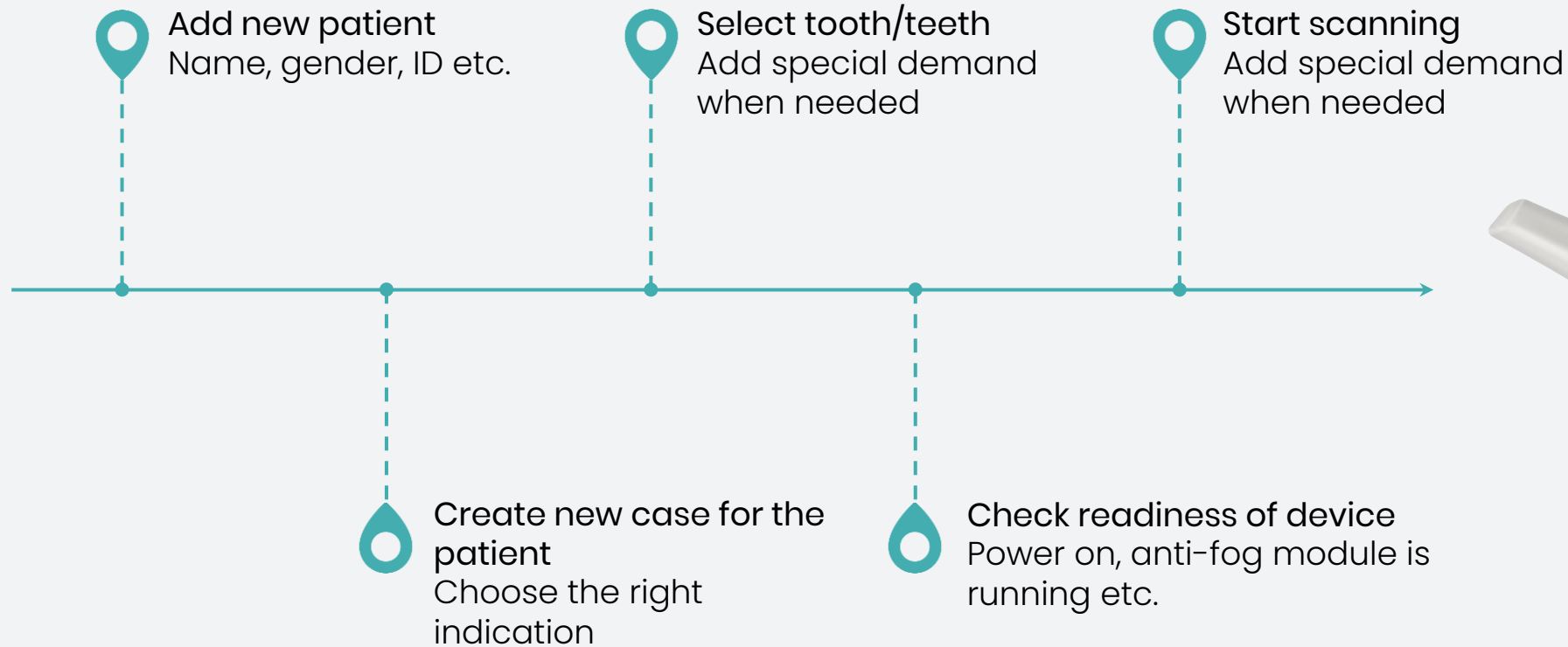
FIRSTCLASS SCAN

Wide Range of Indications Are Scannable



FIRSTCLASS SCAN

FirstClass Scan Software are Simple and Easy to Use



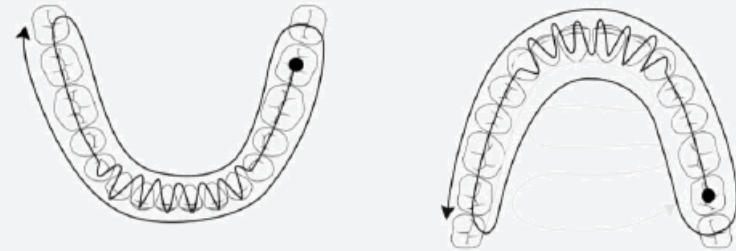
FIRSTCLASS SCAN

Scanning Technique

UNILATERAL or QUADRANT



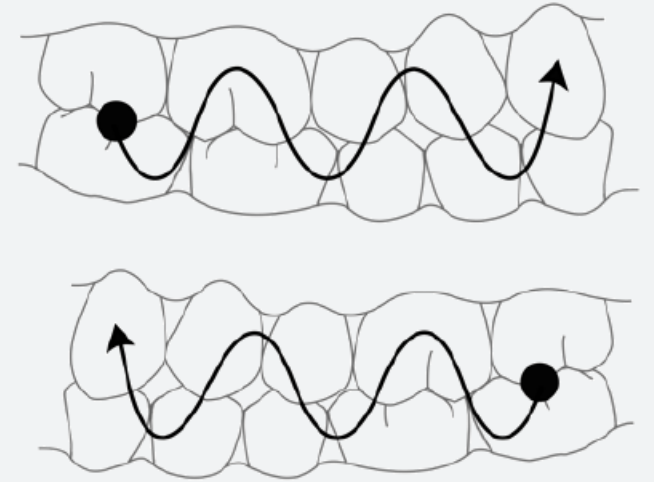
BILATERAL



- The teeth should always be cleaned from saliva and/or blood
- The optimum distance between the tip and tooth is 3-5mm
- Use gingival retraction thread or prepare supragingival margin lines

Occlusion Bite Matching

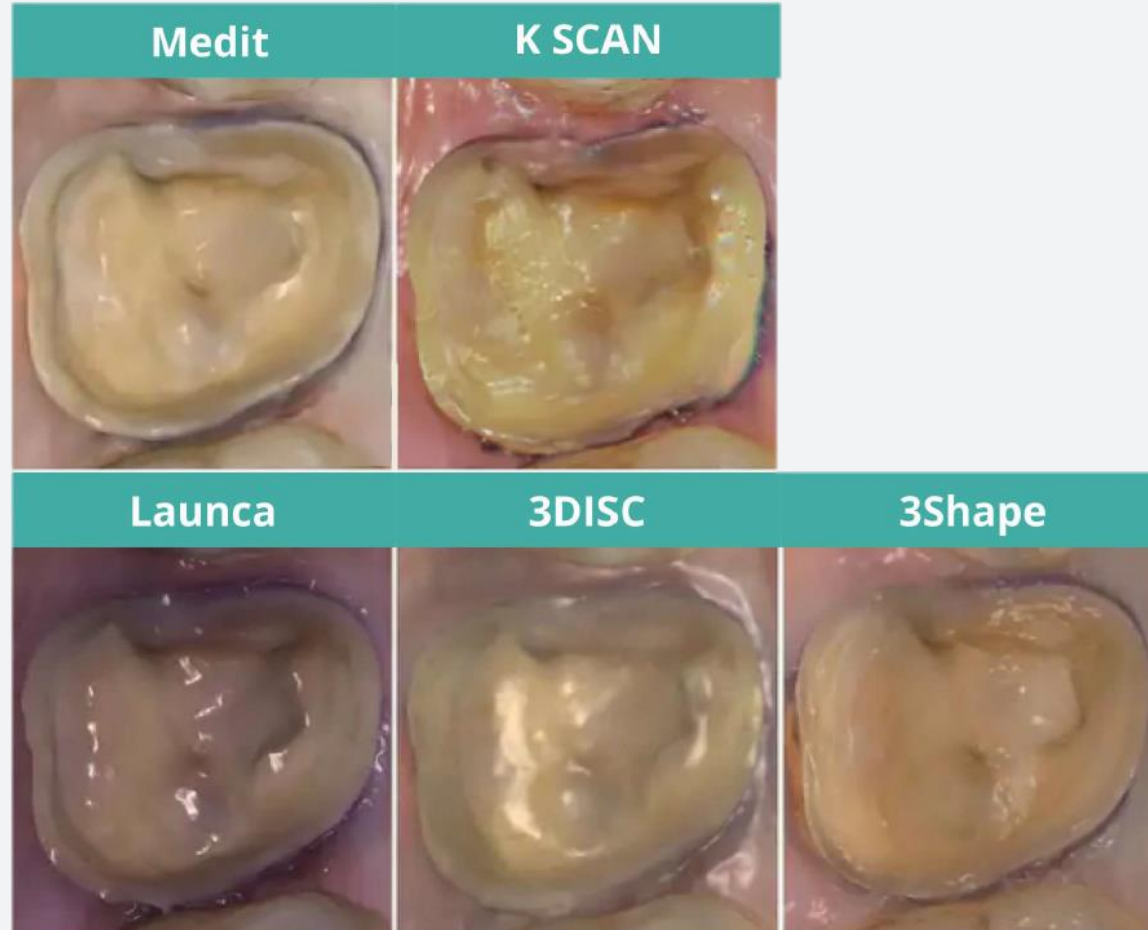
- The scan tip's scan mirror faces the buccal surface of teeth that need to be scanned
- Move the scan tip up and down with an "S type" movement
- At least 4 occlusal points need to be collected (2 per side) for accurate registration of the patient's bite.



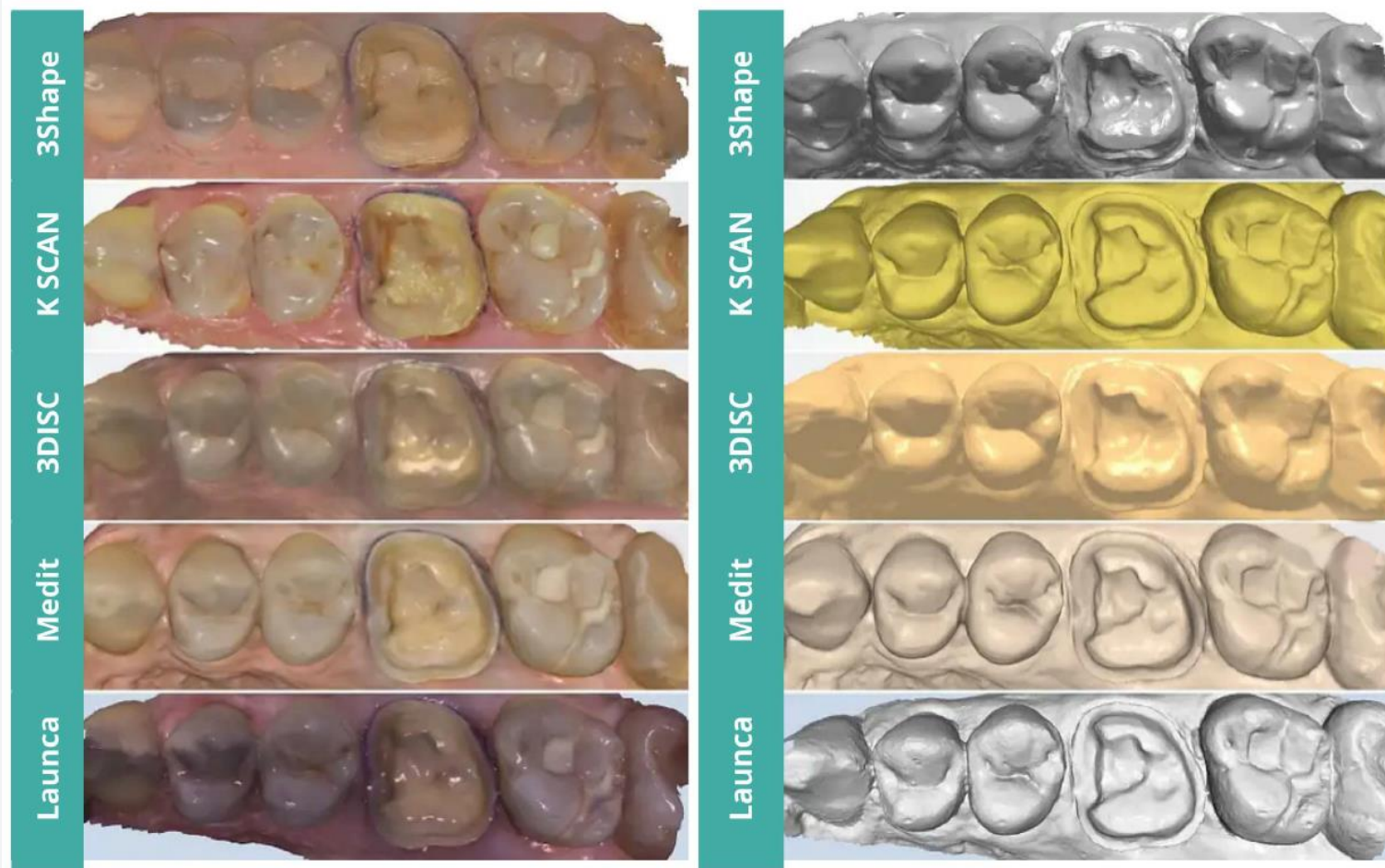
Technical Comparison

| CATEGORY | | SCAN | Medit i500 | Medit i700 | 3Shape Trios 3 Basic | 3Shape Trios 4 Wireless | iTero Element | Planmeca Emerald S |
|--------------|-----------------------|------------------------------------------------|--------------------------------|------------------------------------------------|------------------------------------------------|------------------------------------------------|-------------------|----------------------------|
| Accuracy | Full-arch | 25 µm | 25,2 µm | 10,9 µm | 27,7 µm | 20,8 µm | 40+ µm | 40+ µ |
| | Scan area | 17,6 x 13,2 mm | 14 x 13 mm | 15 x 13 mm | No spec | No spec | 18 x 14 mm | 17,6 x 13,2 mm |
| Speed | Dual-arch and bite | 5 min | 5 min | 5 min | 5 min | 5 min | 8 min | 5 min |
| Handpiece | Dimensions | 240 x 39,8 x 57 | 264 x 44 x 54,5 mm | 248 x 44 x 47 mm | No spec | 299 x 40 x 50 mm | 346 x 50 x 68 mm | 249 x 41 x 45 mm |
| | Weight | 350 g | 280 g | 245 g | 340 g | 375 g | 500 g | 229 g |
| | Capture button | One sided | One sided | One sided | One sided | One sided | Two sided | Two sided |
| Tip | Tip size (front part) | 18,5 x 19 mm | 20 x 15,7 mm | 22,2 x 15,9 mm | 21,5 x 18 mm | 21,5 x 18 mm | 23 x 22 mm | ? x 21,3 mm ? x 16,6 mm |
| | Autoclavable | Up to 100 times 121°C 30 min 134°C 4 min | Up to 50 times 121°C 30 min | Up to 100 times 121°C 30 min 134°C 4 min | Up to 150 times 121°C 15 min 134°C 3 min | Up to 150 times 121°C 15 min 134°C 3 min | Disposable sleeve | 132°C 3 min |
| Connectivity | Length | 2,0 m | 1,8 m | 2,0 m Detachable | No spec | 10,0 m (wireless) | 1,75 m | No spec |
| | Type | USB 3.0 | USB 3.0 | USB 3.1 Gen 1 | USB 3.0 | Wireless | USB 2.0 | USB 3.0 |
| Mobility | Powerbox | Yes | Yes | Yes & No | Yes | Yes | Yes | No |
| | Power adapter | Yes | Yes | Yes & No | Yes | Yes | Yes | No |
| | Trolley | No | No | No | Optional | Optional | Optional | No |
| Calibration | Accuracy calibration | Not required | Every 14 days | Every 14 days | Every 8 days | Every 8 days | Not mentioned | Not mentioned |
| | Color calibration | Not required | not mentioned | not mentioned | Before each scan | Before each scan | Not mentioned | Every 7 days |
| Special Mode | Remote control mode | No | No | Yes | Yes | Yes | Yes | Yes |

Preparation Close-up in Native Software



Scan Comparison



FIRSTCLASS SCAN

Minimum PC Specification

CPU

i7-8750H (6-core 12 thread)

Reference speed 2.21 Ghz, RUI frame speed 3.8 Ghz and above

RAM

16 GB and above

GRAPHICS

RTX1650-4G and above (must be an NVIDIA graphics card)

HDD/SSD

1512 GB and above

SYSTEM

Windows 10 genuine system

DISPLAY RESOLUTION

1920*1080, 60Hz and above

INPUT/OUTPUT PORT

More than 2 types of USB 3.0 (or higher) ports

Recommended PC Specification

CPU

i7-11800H (8-core 16 thread)

Reference speed 2.3 Ghz, RUI frame speed

RAM

16 GB and above

GRAPHICS

RTX3050-4G and above (must be an NVIDIA graphics card)

HDD/SSD

1 TB and above

SYSTEM

Windows 10 genuine system

DISPLAY RESOLUTION

1920*1080, 60Hz and above

INPUT/OUTPUT PORT

More than 2 types of USB 3.0 (or higher) ports

Any Questions so Far?



FIRSTCLASS SCAN